

PROJECT : BOOK LOVERS POINT

Region : Islamabad Pakistan

SUMMARY OF BILL OF QUANTITY

Renovation work

S.NO	DESCRIPION OF WORK	AMOUNT
1	AREAS	
2	WOODEN WORK	
3	KITCHEN WORK	
4	FURNITURE WORK	
5	TILE WORK	
6	ELECTRIC WORKS	
7	DECORATION	
8	SANITARY AND PLUMBING	
9	EQUIPMENTS, APPLIANCES AND ELECTRICAL MACHINES	
10	DISMANTLING	
	Total Amount :	

ABBREVAITIONS

The Following abbreviations have been employed in this summary

Running foot	RFT
Running Yard	Ryd
square Foot	Sft
cubic foot	Cft
Square Yard	Syd
Pound	lb.
Inch	"
Millimetre	mm
Centiner Meter	cm
Square Meter	sq.m
Cubic Meter	cu.m
Number	No.
Numbers	No.s

1 AREAS

S.No	Description	Size	Area	Unit
1	Total Buidling Area	49' x 16.2'	793.8	sft
2	Total Area Covered by Kitchen and services	9'3"x8.5'	78.625	sft
3	Area of wooden Floor Customer and study area deducted arae of kitchen and 1' high floor decking	as per dwg.	528	sft
4	Area of Floor Decking 1' high Customer and study area	13' x 17'	221	sft
5	Area covered by moveable furnitures	as per dwg.	211.51	sft
6	Area covered by wooden work (book shelve case)	as per dwg.	58.2	sft
7	Area of Paint work on Ceiling	50' x 17'	850	sft
8	Area of Paint work on walls	120' x 10'	1200	sft
9	Area of Brick work on Exterior walls deduction (doors and windows) 156 sft	51' x 10'	354	sft

2 WOODEN WORKS

S.No	Description	Size	Area	Unit
1	wooden work on All Pillars 6" +10" +6" wraped with 10' high x 6 pillars	22" x 10' x 6	109.8	sft
2	Wooden work for book shelves	as per dwg.	409	sft
3	wooden work for kitchen counter front face areas	16' x 2.75'	44	sft
4	wooden cabinets for kitchen area total = L 18.5' x 2.75' high	18.5'x2.75'	50.88	sft
5	wooden cabinets for kitchen wall units	5' x 2.75'	13.75	sft

3 KITCHEN WORK

S.No	Description	Size	Area	Unit
1	Providing and installaiton of Kitchen cabinets which includes open and closed cabinets 18 mm thk shutters, drawers , All hinges, nails, glue, and accosseries will be used	49' x 16'	784	sft
2	providing and installaiton of Kitchen counter top with 1.25" front baffle and 3" back splash Corian, Marble,quartz stone or Granite)	12' x 2.5'	30	sft
3	Providing and Fixing Dual mount Single bowl Stainless steel Sink with drainboard, size (24" x 20" x 10") Complete in any color with two holes, coupling chain & Plug, and Grease trap best quality fixed to brick or concrete work including mixer and marble top complete in all respect as approved by the Engineer-in-Charge	1	1	each

4 FURNITURE WORK

S.No	Description	Size	Area	Unit
1	CHAIRS SIZE 22"x 22" with cushion and without cushions Total 33 Chairs	22"x22" x 36 No.s	110.51	sft
2	long sofa will be manufacture at site	2' x 11.5'	23	sft
3	Tables square, rectangular, and long tables Having sizes of 2'x2', 4'x2', 2'x2' = 6 NO.s, 4'x2' = 4 No.s, 8' x 2.75' = 1 No.	Total	78 211.51	sft sft

5 TILE WORK

S.No	Description	Size	Area	Unit
1	Providing and installation of Tiles on walls in kitchen area	11' x 10'	110	sft
2	Providing and installation of Tiles on walls in kitchen back wall	8' x 10'	80	sft
3	Providing and installation of Tiles on walls in kitchen floor	8' x 8'	64	sft
3	Providing and installation of Tiles at exterior wall only Deducted opening area of Doors nad windows (156 sft)	50' x 11' deduction 156sft	394	sft

6 ELECTRICAL WORK

S.No	Description	Size	Qty	Unit
1	Providing and installation of pendant lights 2 big +14 standard size		14	No.s
2	Providing and installation of Track Light 20 watt 4000k with rail track 6 pieces		26	No.s
3	providing and installation of Wall lights antique style		6	No.s
4	Providing and supply of 4 mm fast,high engery Brand Cable for normal powers and 6 mm for ac units and 6 mm for espresso machine and pastry shwocase	Bundles.	6	No.s
5	providing and fixing of sockets and main distribution panel with Six 10amp circuit breaker and Two 30 amp circuit breaker + 1 63 amp Voltage protector including switching 2+2 ~ 8+2 type universal			

7 DECORATION WORK

S.No	Description	Size	qty	Unit
1	Providing of Decorative Planters, Plant, Plant Boxes sizes as per dwg	1 package	1	No.
2	Providing of decorative table planst, book holder, ornamaments	1 package	1	No.
3	Providng of wall frame images as per the reference images	1.5' x 1.5'	4	No.

8 SANITARY AND PLUMBING WORK

S.No	Description	Size	Qty	Unit
1	Providing and installation of Sanatary drain pipe with all the feature and hardware will be used to provide full working drange system for kitchen area	1 package	1	No.
2	Providing and installation of all the required plumbing water fixtures and hardwares for Kitchen sink area	1 package	1	No.
3	Providing and installation of R0 2 stage system for fresh water for espresso machine and hot water system		1	No.
4	Providing and installation of Grease trap under sink cabinet and connected with main sewerage line		1	No.
5	providing and installation of instant waterheater for kitchen sink area		1	No.

9 EQUIPMENTS, APPLIANCES AND ELECTRICAL MACHINES

S.No	Description	Size	Qty	Unit
1	CEILING FAN : standard type Ac dc connection	3'x3'	4	No.s
2	ESPRESSO MACHINE	3' X 2'	1	No.
3	Fridge under counter type	2' X 2'	1	No.
4	Touch POS machine with thermal printer and Standard Printer	2' X 2'	1	No.
5	waffle maker and sanwich maker	1.25'x1.25'	1	No.
6	Water Dispenser	1'x1'	1	No.
7	Kindle Dictionary		4	No.s
8	Laptop 11 gen 32 gb ram 256 gb hdd		4	No.s
9	Over the ear head phones wired type		4	No.s
10	standing 4 ton inverter heat and cold A.C		2	No.s
11	Mosquito Killer		3	No.s
12	Surround Sound system connected with Main Computer		1	No.
13	50" samsung led Tv		1	No.
14	overhang items above kitchen area with menu board and glass cup holders etc		1	No.
15	Microwave Single phase	1.25' x 1.5'	1	No.

10 DISMANTLING WORK

S.No	Description	Size	qty	Unit
1	Removing and cleaning of all the Existing Furniture and wall mount shelves, Fake Pillars, Decoration, Damaaged wall plaster, Floor Tiles, Ceiling Damaged Plaster, Ceiling Gypsum, Electrical cables, wiring and preparing the Clean Area for Renovation	Package	1	No.
2	Preparing the Exterior Area for Renovation work	Package	1	No.

Bill of Quantities for National Book Foundation
Bill of Quantities (BOQ)

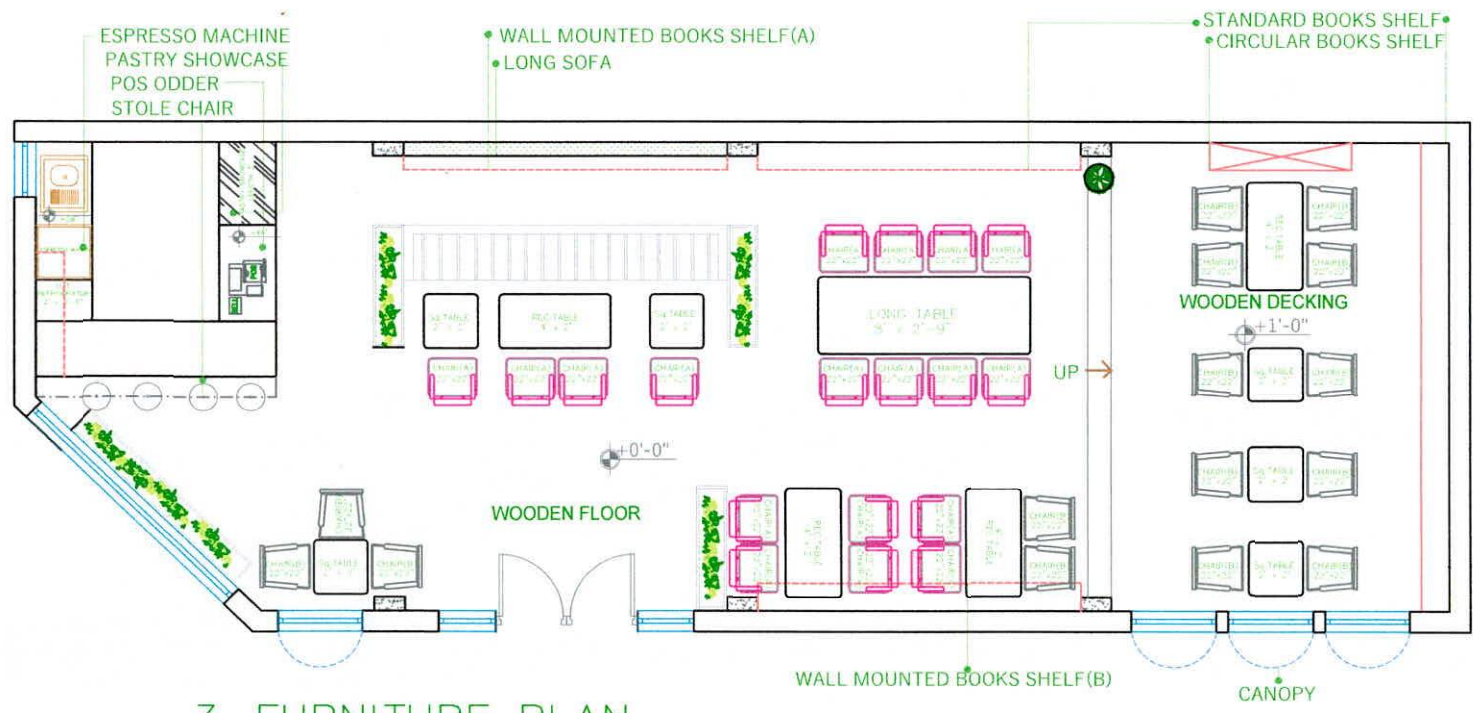
Sr.No	Description	Quantities	Units	Rate		Amount. Rs
				Figure	Words	
1	Supply and erection of Pastry showcase of Approved Quality with Single Phase, up to 03 level for 240 volts, Product Size: (WxDxH): 47.24" x 28.74" x 47.24"	1	Each			
2	Providing and Installing of POS Machine , including the cost of a mini thermal printer of Approved Standard Quality, Touch POS System(2' x 2')	1	Each			
3	Supply and Fixing of 3/4" thick best quality factory polished Marble full size single Piece on Cafe front countertop , fine dressed on the surface without winding over 3/4 inch cement sand mortar (1:4) Jointing and washing the tiles with with cement slurry mixed with matching colour pigment , including curing , grinding and rubbing etc completes in all respect , as per instructions of the engineer in charge(as per finishes).	36.4	Sq.ft			
4	Providing and Fixing of wooden battens /café front counter : including termite Proofing and polishing with synthetic enamel as specified, with handles hinges, screws, etc complete all respects, (14' x 2' deep x 3'.8" high)	106.4	Sq.ft			
5	Providing and Fixing Dual mount Single bowl Stainless steel Sink with drainboard, size (24" x 20" x 10") Complete in any color with two holes, coupling chain & Plug, and Grease trap best quality fixed to brick or concrete work including mixer and marble top complete in all respect as approved by the Engineer-in-Charge	1	Each			
6	Providing and fitting Pull out Dustbin Under Sink partly fixed and partly sliding of approved manufacture complete all respects as approved by the Engineer-in-Charge.	1	Each			
7	Providing and Fixing Fridge: Under Counter , of Approved Standard Quality,(2'x2'x3') as approved by the Engineer-in-Charge	1	Each			
8	Providing and Fixing Espresso Machine of Approved Quality with 03 group Single Phase, 240Volts, Dimensions: 49.78cm H x 58.9cm D x 98 cm W as approved by the Engineer-in-Charge	1	Each			
9	Providing Coffee Grinder of Approved Standard Quality complete in all respect as approved by the Engineer-in-Charge	1	Each			
10	Providing and Fixing Hot water dispensers for Café of Approved Standard Quality complete in all respect as approved by the Engineer- in-Charge	1	Each			
11	Providing knock box of Approved Standard Quality complete in all respect as approved by the Engineer-in-Charge	1	Each			
12	Providing Menu boards, Glass, and cup holders , (Size - 2' x 8') x 2' D of Approved Standard Quality complete in all respect as approved by the Engineer-in-Charge	1	Each			
13	Providing and Fixing Kitchen Wall Cabinets : of MDF Board (Medium Density Fiber Board) sheet on both side glazed shutters and box comprising of 3/4" thick laminated MDF Sheet i/c the cost of 1mm thick PVC tape dully hot pressed on alleged softthe shutters / Pannls / drawers etc with machine i/c the cost of self closing box type hinges , handles , screws, glue and rawal plugs , drawer and locking arrangement complete all respect as approved and directed by engineer in charge (4' x H: 2.75' x D: 1.2')	1	Each			

14	Providing and fixing Working Counter: with Marble Topping of 2' deep kitchen counter, open and closed cabinets,(2' x 7' x 2.75') complete all respect	1	Each			
15	Providing Juicer+shaker (Panasonic 176) complete all respect as approved and directed by Engineer-in-Charge	1	Each			
16	Providing and Fixing Microwave (Haier, 25100, 25L) complete all respect as approved and directed by Engineer-in-Charge	1	Each			
17	Providing Crockery Cups, Glasses, Spoons, forks, knives, all cutlery set trays, Plates Etc. complete all respect .	1	Each			
18	Providing RO Water Filter of 02 Stage mounted under sink cabinet area complete all respect as approved and directed by Engineer-in- Charge	1	Each			
19	Providing Instant water heater small one connected with sink tap mounted under counter sink complete all respect as approved and directed by Engineer-in-Charge	1	Each			
20	Providing Packaging: of all packing items, like shoppers, tissues, cup holders, disposable crockery etc complete all respect.	1	Each			
21	Providing Accessories including papers, tissues, service counter items sugar,brown sugar, straws etc complete all respect.	1	Each			
22	Providing Waffle makers complete all respect as approved and directed by Engineer-in-Charge	1	Each			
23	Providing Espresso group handle apart of espresso machine complete all respect as approved and directed by Engineer-in-Charge	1	Each			
24	Providing Cup cards holder complete all respect	1	Each			
25	Providing and Fixing Book Shelves: 18 mm thick MDF Board (Medium Density Fiber Board) sheet full height wall to wall bookshelves on both sides glazed shutters and box comprising of laminated MDF Sheet i/c the cost of 1mm thick PVC tape dully hot pressed on alleged softhe shutters / Pannls / drawers etc with machine i/c, handles, screws, glue and rawal plugs, drawer complete all respect as approved and directed by an engineer in charge (11'-7" x 10')	115.0	Sq.ft			
26	Providing and Fixing Wall Mounted Book Shelve A: 18 mm thick MDF Board (Medium Density Fiber Board) sheet wall mounted & wall to wall bookshelves on both sides glazed shutters and box comprising of laminated MDF Sheet i/c the cost of 1mm thick PVC tape dully hot pressed on alleged softhe shutters / Pannls / drawers etc with machine i/c, handles, screws, glue and rawal plugs, drawer complete all respect as approved and directed by an engineer in charge (11'-7" x 4')	46.8	Sq.ft			
27	Providing and Fixing Wall Mounted Book Shelve B: 18 mm thick MDF Board (Medium Density Fiber Board) sheet Wall mounted & wall to wall bookshelves on both sides glazed shutters and box comprising of laminated MDF Sheet i/c the cost of 1mm thick PVC tape dully hot pressed on alleged softhe shutters / Pannls / drawers etc with machine i/c, handles, screws, glue and rawal plugs, drawer complete all respect as approved and directed by an engineer in charge, (11'-3"x4')	45.2	Sq.ft			
28	Providing and Fixing Book Shelve B: 18 mm thick MDF Board (Medium Density Fiber Board) sheet Full height wall to wall bookshelves on both sides glazed shutters and box comprising of laminated MDF Sheet i/c the cost of 1mm thick PVC tape dully hot pressed on alleged softhe shutters / Pannls / drawers etc with machine i/c, handles, screws, glue and rawal plugs, drawer complete all respect as approved and directed by an engineer in charge, (17' x 9')	153.0	Sq.ft			

29	Providing and Fixing Decorative Round Book Case 18 mm thick MDF Board (Medium Density Fiber Board) sheet Full height wall to wall bookshelves on both sides glazed shutters and box comprising of laminated MDF Sheet i/c the cost of 1mm thick PVC tape dully hot pressed on alleged softhe shutters / Pannls / drawers etc with machine i/c, handles, screws, glue and rawal plugs, drawer complete all respect as approved and directed by an engineer in charge ,(7' x 7')	49	Sq.ft			
30	Providing and fixing 1st class Ash solid wood wrought joinery in paneled or paneled and glazed in long table Solid Table top with ash wood legs i/c the cost of nails complete in all respect as approved and directed by the Engineer in charge (2.75' x 8')x 26~27 inch High	22	Sq.ft			
31	Providing and fixing Sofa Chair: 22" x 22" Ash wood solid Chiars as per the reference images complete in all respect as approved and directed by the Engineer in charge	33	Each			
32	Providing and fixing Rectangular Table : Ash wood table (4' x 2') x 26" ~ 27 " high complete in all respect as approved and directed by the Engineer in charge	8	Sq.ft			
33	Providing and fixing Square Table : wooden table metal legs , (2' x 2') x 26" ~ 27 " high complete in all respect as approved and directed by the Engineer in charge	24	Sq.ft			
34	Providing Bar stool: leather Style Barstool , (12" x 12") as per the market reference image complete in all respect as approved and directed by the Engineer in charge	4	Each			
35	Providing and Fixing Pillars: Apply Solid Wood batten Vertically. to cover 6 pillars, Front Side = (Width=10", Height=9', Sides = 6") 18mm thk battens complete in all respect as approved and directed by the Engineer in charge	6	Each			
36	Providing Planters: Plants+ Planter pots, (3' ~ 4' x 1' x H:2')complete in all respect as approved and directed by the Engineer in charge	5	Each			
37	Providing and Fixing Wooden Floor: Wooden Parquet Floor/ Laminate Flooring, (38' x 17') complete in all respect as approved and directed by the Engineer in charge	646	Sq.ft			
38	Providing and Fixing Wooden Decking : 1' high wooden decking with one one step, (12'x17')complete in all respect as approved and directed by the Engineer in charge	204	Sq.ft			
39	Providing and Fixing New Glass windows : Industrial style windows arch type , [3' x 7']complete in all respect as approved and directed by the Engineer in charge	63	Sq.ft			
40	Providing and Fixing New Main Door : Main Door with 2 aluminium glass windows attached left and right, (9' x 8')complete in all respect as approved and directed by the Engineer in charge	72	Sq.ft			
41	Providing and Fixing Exterior wall design : 49' x 9'complete in all respect as approved and directed by the Engineer in charge	441	Sq.ft			
42	Decoration : all decorative items as per the required areas, includes artificial flower pot, ornaments, book holder etc.	50	Each			
43	Providing Outside : Brick Tile work to apply on outer surface of walls from floor to celing antique brick style complete all respect s approved and directed by the Engineer in charge	441	Sq.ft			
44	Providing Spot lights : Black Color track Light, 4000k 20 watt complete all respect s approved and directed by the Engineer in charge	21	Each			
45	Providing Pendant Light : Black Pendant Light , 5500 K 12 watt each complete all respect s approved and directed by the Engineer in charge	14	Each			

46	Providing Pendant Light : Bronze Color Big Pendant Light, 12 watt each 5500 k complete all respect s approved and directed by the Engineer in charge	2	Each			
47	Providing Rope light : LED Rope Lighting one roll 4000k warm light complete all respect s approved and directed by the Engineer in charge	40	Each			
48	Providing Exterior wall lights - Antique bulb Lamp lights complete all respect s approved and directed by the Engineer in charge	4	Each			
49	Providing Interior wall lights - wall mounted lights complete all respect s approved and directed by the Engineer in charge	4	Each			
50	Providing Hanging lights complete all respect s approved and directed by the Engineer in charge	3	Each			
51	Providing Floor standing 4 ton inverter heat & Cool 24 HEDC Chillers (Haier) single phase complete all respect s approved and directed by the Engineer in charge	2	Each			
52	Providing Water Dispensers (PEL, 115, 2.5L) complete all respect s approved and directed by the Engineer in charge	1	Each			
53	Providing Mosquitoes Killer (Westpoint) complete all respect s approved and directed by the Engineer in charge	3	Each			
54	Providing Sound System (LG) complete all respect s approved and directed by the Engineer in charge	1	Each			
55	Providing LED (TCL) 50 inch complete all respect s approved and directed by the Engineer in charge	1	Each			
56	Providing Compupter system core i7-9th generation (Dell) Desktop with LED, Keyboard & Mouse complete all respect s approved and directed by the Engineer in charge	4	Each			
57	Providing Kindle dictionary Kindle Paperwhite 11th Generation 16GB Black complete all respect s approved and directed by the Engineer in charge	4	Each			
58	Providing Head Phones wired complete all respect s approved and directed by the Engineer in charge	4	Each			
59	Supply and Fix Ceiling fan- Royal model with dimmer, blades, canopy, and rod incl connections, proven of cable, and ceiling rose for fan 140 CM sweep without regulator	7	Each			
60	Supply and Fixing Channels for track light complete all respect s approved and directed by the Engineer in charge	12	Each			
61	Supply and Fixing Track lights complete all respect s approved and directed by the Engineer in charge	36	Each			
62	supply & Installation, testing, and commissioning of complete Breakers-20Amp complete all respect	2	Each			
63	supply & Installation, testing and commissioning of complete Breakers-10Amp complete all respect	1500	Each			
64	Supply & Installation, testing and commissioning of complete Breakers-63Amp complete all respect	1	Each			
65	Supply at the site, installation, testing, and commissioning of Two, three , four five, and six gang light control switches 10 Amps, 250Volts one way, including appropriate size concealed MS, powder coated back box, complete in all respects.	50	Each			
66	Supply and Fixing dimmer switch complete	7	Each			
67	Windows rehabilitation as approved and directed by the Engineer in charge	392	Sq.ft			
68	Back wall rehabilitation as approved and directed by the Engineer in charge	441	Sq.ft			

69	Spraying anti-termite proofing Walls treatment for termites by using liquid FMC Bi-flex 2.5%EC Mixing Ratio 1:50=137-Sft or using liquid MIRAGE Ali Akbar /RANGERS Auriga 5% SC Mixing Ability-HEXTAR Ratio 1:110=205-Sft or any other equivalent approved liquid applying with shower and certificate will be provided by the contractor for 10-years complete in all respect .as approved by the Engineer Incharge	1170	Sq.ft			
70	Shopping book model on the exterior wall as approved and directed by the Engineer in charge	1	Each			
71	Ceiling paint as approved and directed by the Engineer in charge	850	Sq.ft			
72	Ceiling Decoration as approved and directed by the Engineer in charge	850	Sq.ft			
73	Dismantling single tiling of brick or PCC in roof or floor, laid in CM, including half bricks or blocks on edge, in any portion.	793.8	Sq.ft			
74	Providing and Fixing Wooden floor & skirting in all respect as approved and directed by the Engineer in charge	850	Sq.ft			
75	Providing and Fixing Wall mounted book Shelves in all respect as approved and directed by the Engineer in charge	36.4	Sq.ft			
76	Prepare surface with Emulsion Paint 03-coats upto 40' high (Berger, ICI, Diamond , Brighto (interior and exterior) in all respect as approved and directed by the Engineer in charge	1956	Sq.ft			
77	Providing and Fixing Closure of ventilator complete in all respect as approved and directed by the Engineer in charge	56	Sq.ft			
Total Amount						



3-FURNITURE PLAN

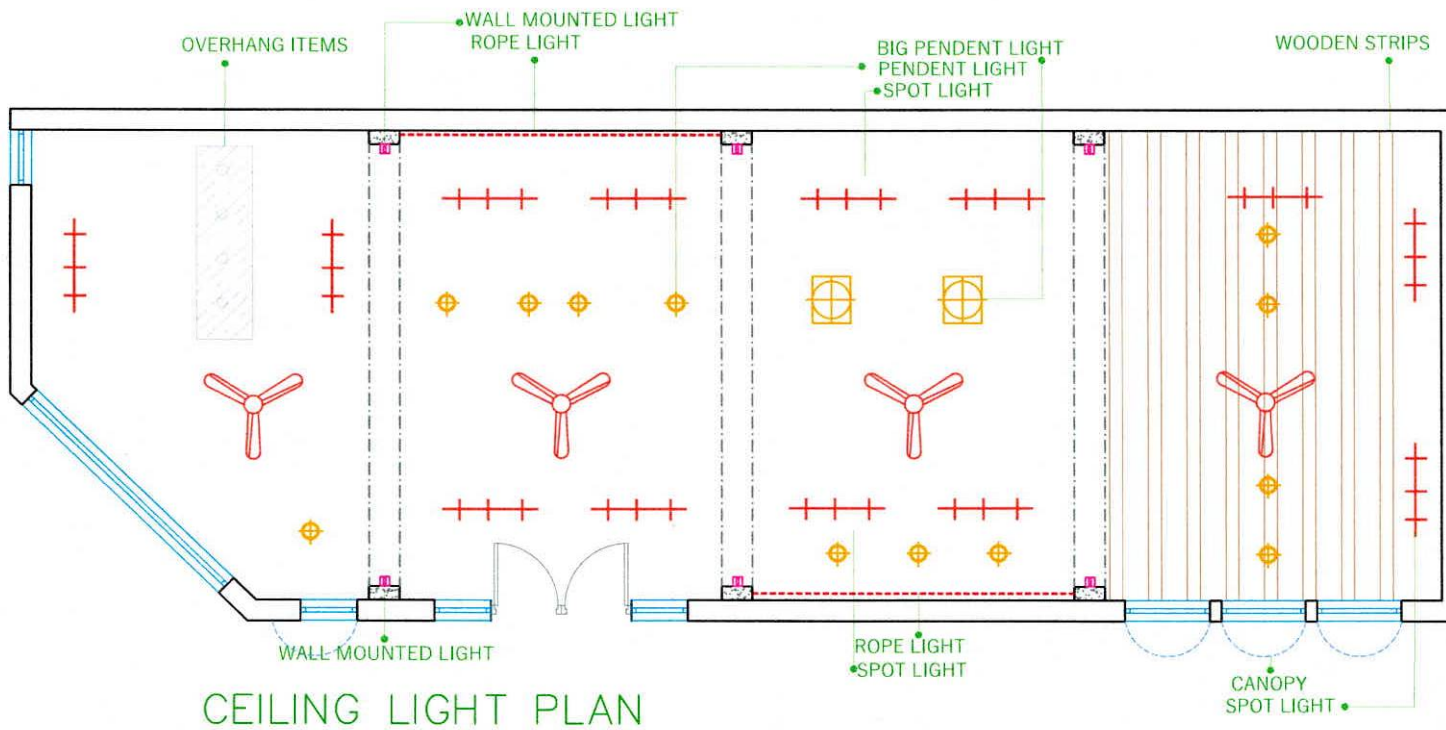
TABLE



CHAIRS (A)

CHAIRS (B)

OWNER	
OWNER'S SIGN.	
ARCHITECT SIGN.	
STRUCTURE ENGR. SIGN.	
DRAWING TYPE:	
DRAWN BY:	CHECK BY:
DATE: JULY-2023	SCALE: FIT TO PAPER



OWNER

OWNER'S SIGN.

ARCHITECT SIGN.

STRUCTURE ENGR. SIGN.

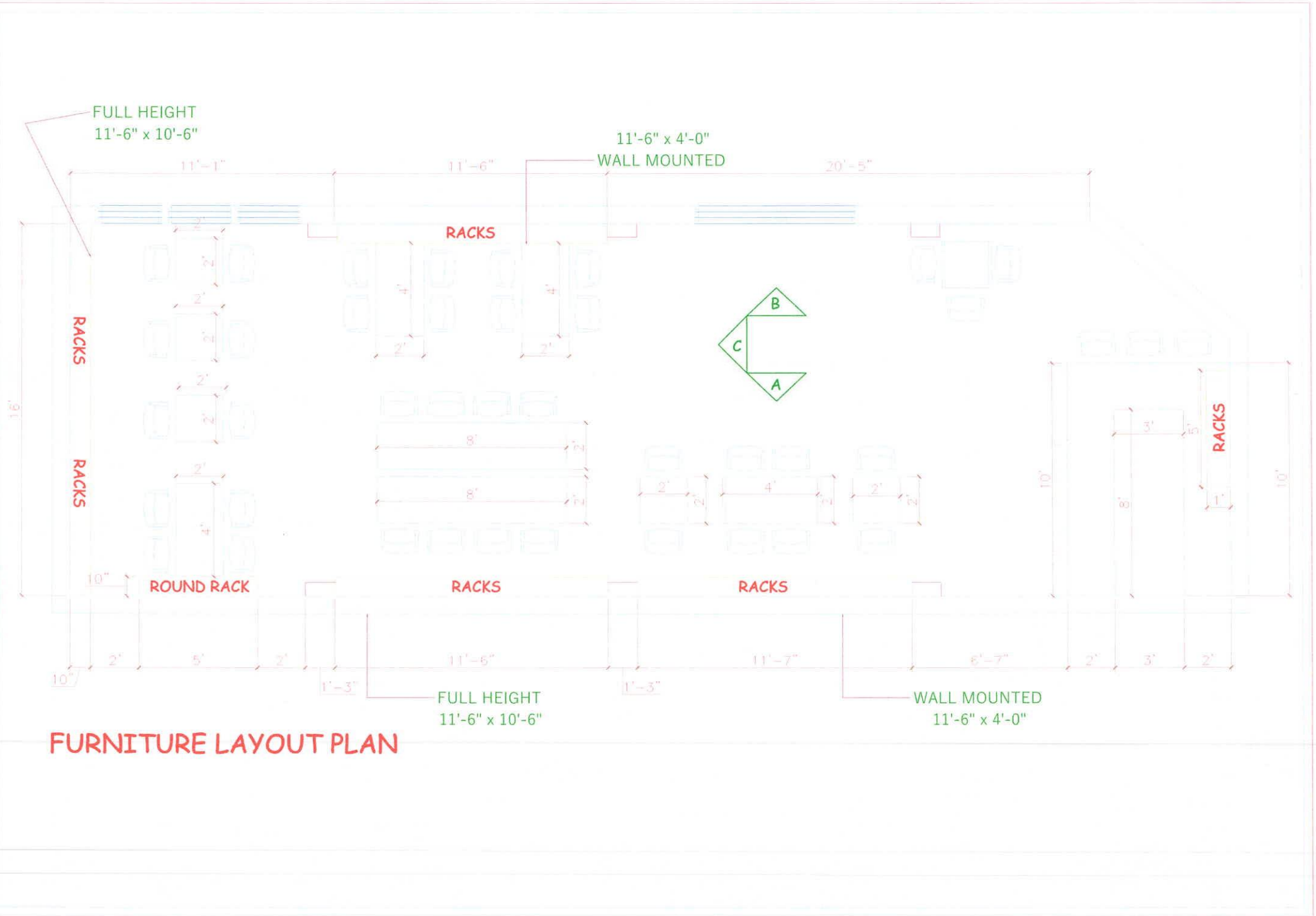
DRAWING TYPE:

DRAWN BY:

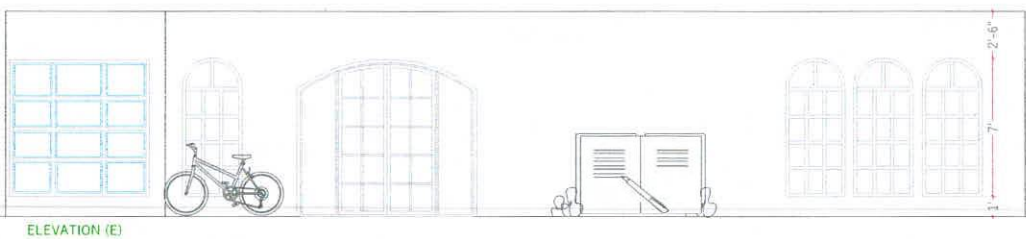
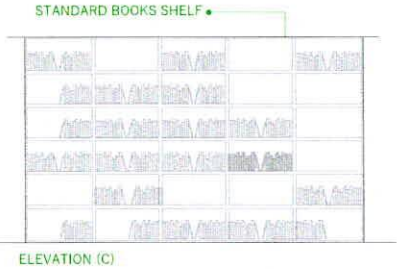
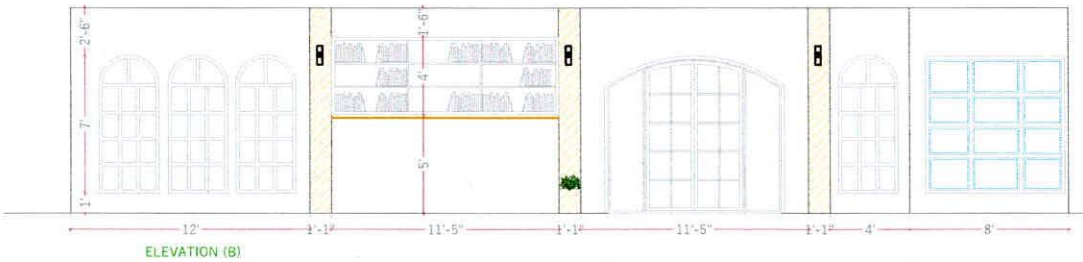
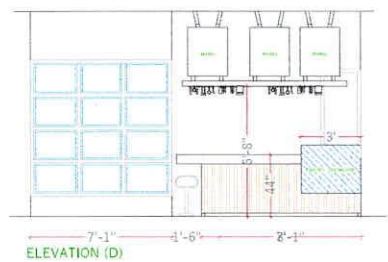
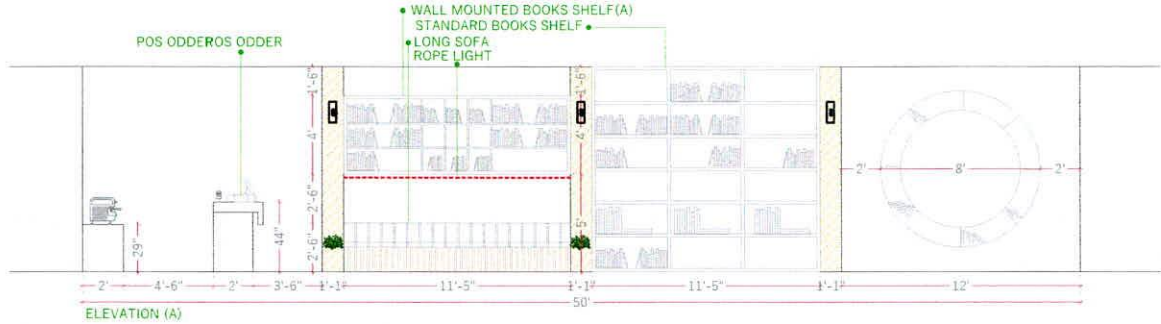
CHECK BY:

DATE: JULY-2023

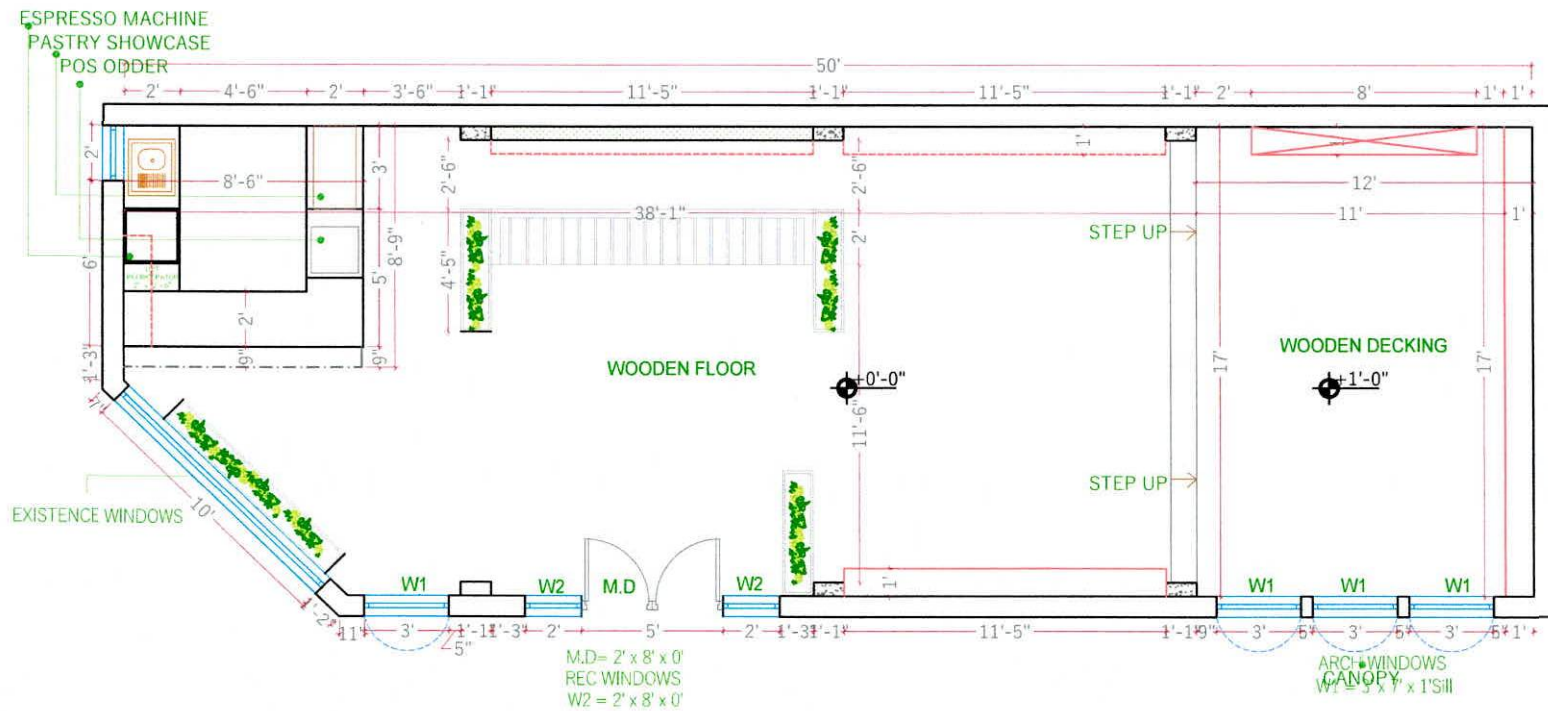
SCALE: FIT TO PAPER



FURNITURE LAYOUT PLAN

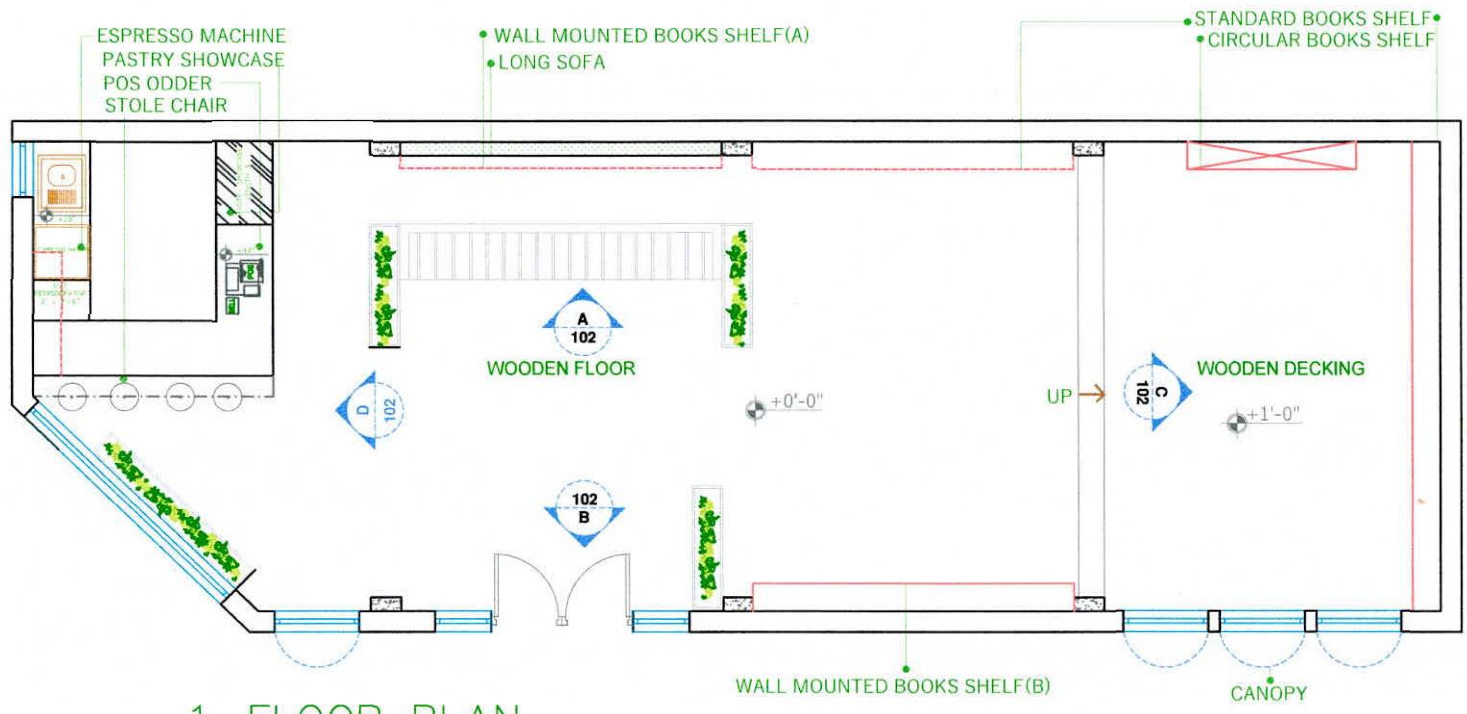


OWNER	
OWNER'S SIGN:	
ARCHITECT SIGN:	
STRUCTURE ENGR. SIGN:	
DRAWING TYPE:	
DRAWN BY:	CHECK BY:
DATE: JULY-2024	SCALE: FIT TO PAPER



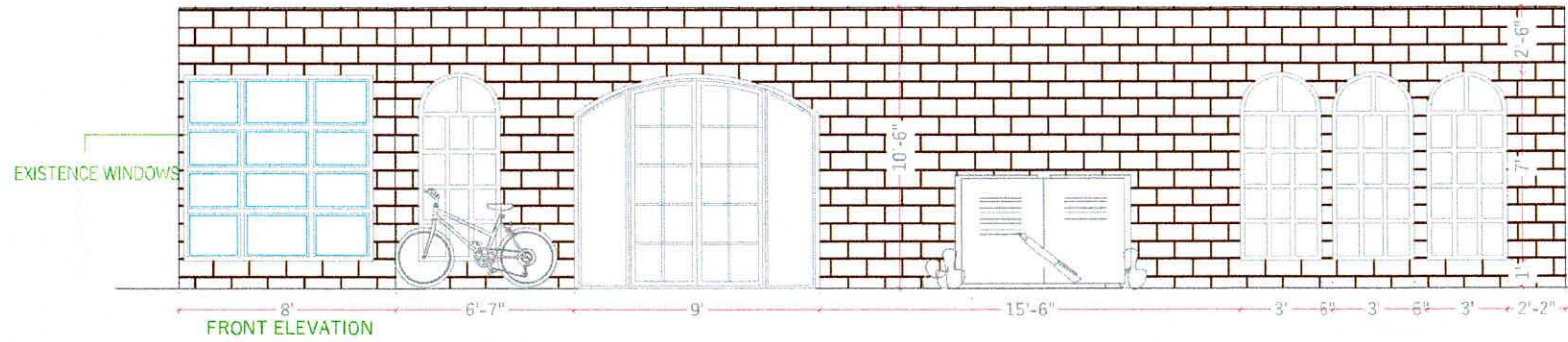
2-DIMENSION PLAN

OWNER	
OWNER'S SIGN:	
ARCHITECT SIGN:	
STRUCTURE ENGR. SIGN:	
DRAWING TYPE:	
DRAWN BY:	CHECK BY:
DATE: JULY 2023	SCALE: FIT TO PAPER



1-FLOOR PLAN

OWNER	
OWNER'S SIGN.	
ARCHITECT SIGN.	
STRUCTURE ENGR. SIGN.	
DRAWING TYPE.	
DRAWN BY:	CHECK BY:
DATE: 10/13-2023	SCALE: FIT TO PAPER



OWNER

OWNER'S SIGN.

ARCHITECT SIGN.

STRUCTURE ENGR. SIGN.

DRAWING TYPE.

DRAWN BY:

CHECK BY:

DATE: JULY 2011

SCALE: FIT TO PAPER

